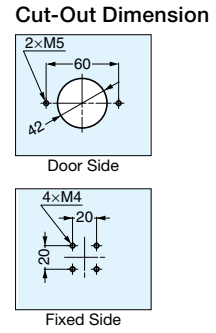
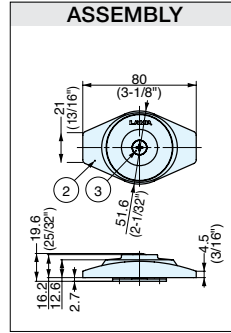
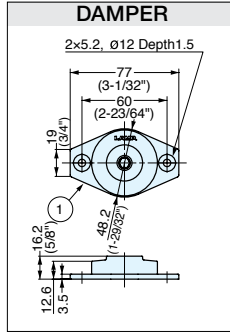
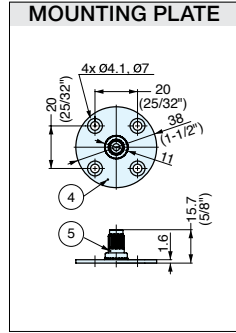
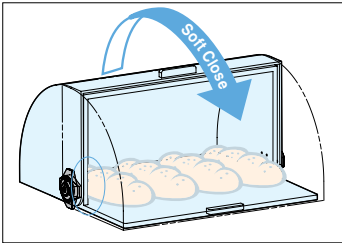


# DISK DAMPER

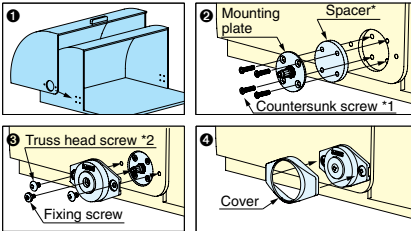


UDD

- Disc-shaped damper gently closes lid without slamming shut.
- Narrow profile for unobtrusive installation.
- Suitable for food service environments.
- Successfully passed 30,000 open/close private cycle test.
- Operating temperature: 5-35 °C (41-95°F)
- Spacer and installation screws are not included, and vary with application. Please contact customer service for more information.

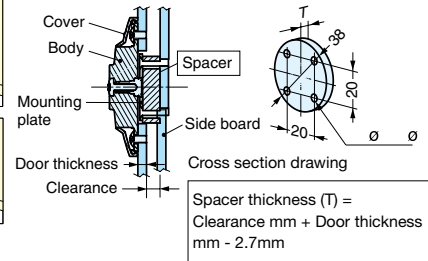


### How to Install

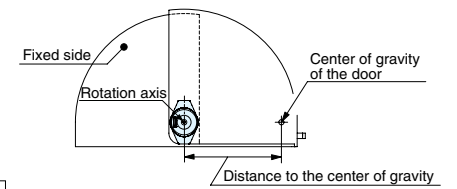


\*1, \*2 screws and Spacer are not included.

### Spacer



### Damper Selection



\*Torque = Distance to the center of gravity x 1/2 x Door weight

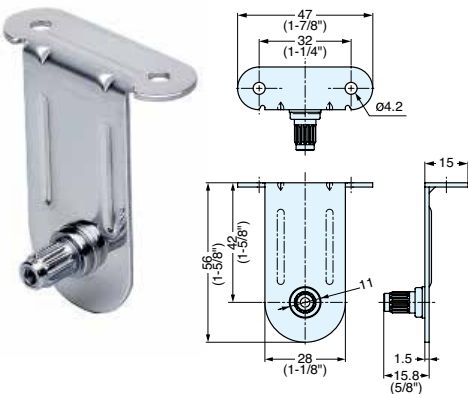
Item No.	Handing	Torque (kgf-cm)	Weight (g)	Box Qty (pcs)
UDD-S-L	Left	5.1-10.2	90	20
UDD-S-R	Right	( 4.4-8.9 lbs-in )		
UDD-M-L	Left	10.2-20.4		
UDD-M-R	Right	( 8.9-17.7 lbs-in )		
UDD-H-L	Left	20.4-30.6		
UDD-H-R	Right	(17.7-26.6 lbs-in)		

No	Part Name	Material	Finish
①	Main Body	ABS Plastic	Light Grey
②	Cover		
③	Screws	Steel	Nickel
④	Mounting Plate		
⑤	Axis		Zinc

# UDD DISK DAMPER BRACKET

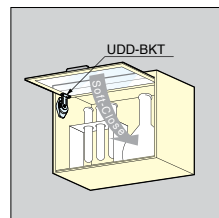


UDD-BKT

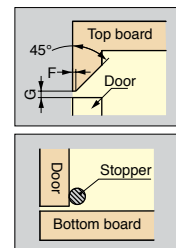
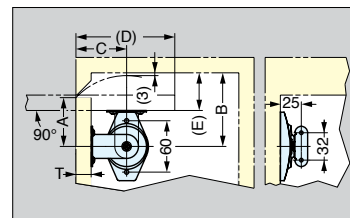


- Bracket for disk damper UDD for upward-opening door.
- Catch is needed for holding door in opened position (not included).
- Use SDS-50G face plate for glass/acrylic door.
- Stop required to prevent over rotation (not included).

### Application Example



### Cut-Out Dimension



Item No.	Material	Finish
UDD-BKT	304 Stainless Steel	Plain

T: Door Thickness	A	B	C	D	E	F	G
5	46	70	49	95	26	1	3
15	54	82	57	111	40	2	4
18	57	86	60	117	44	3	5